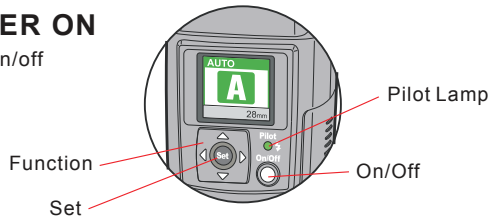


1 POWER ON

Press on/off



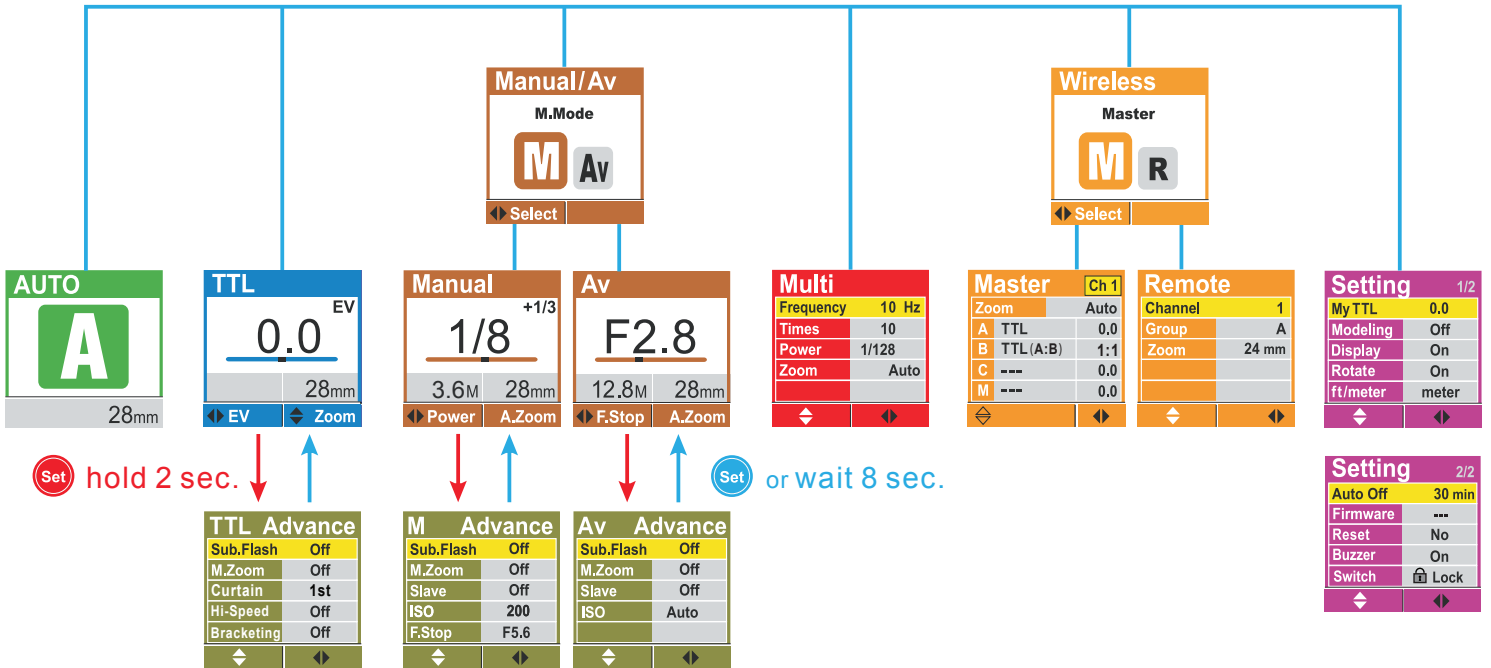
2 FUNCTION SET

Select function press

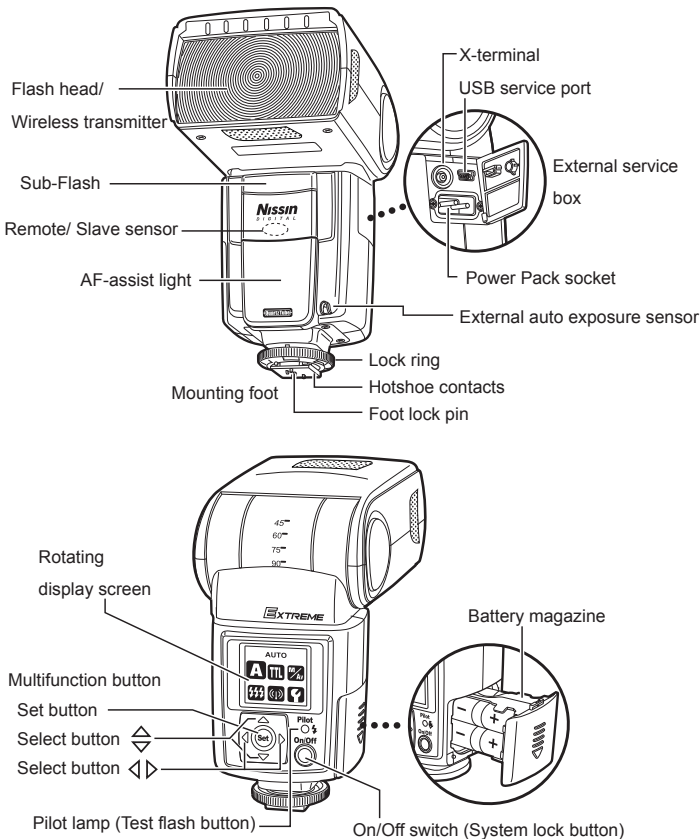
Confirm press



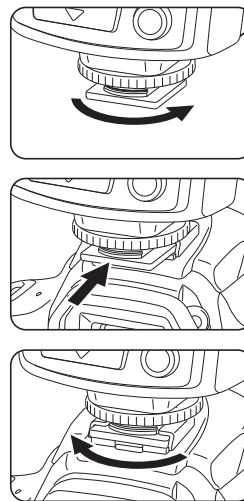
Set or wait 8 sec.



Nomenclature



Mounting MG8000 on the Camera



1. Turn off the power switch of both MG8000 and the camera.
2. Turn the lock ring of MG8000 to loosen it all the way as shown in the picture.
3. Slide the mounting foot of MG8000 into the hotshoe of the camera.
4. Turn the lock ring to opposite direction and tighten it.
5. Lock pin comes out to hook the foot at the hotshoe for sure contact.

Removing MG8000 from the Camera

- Loosen the lock ring and slide the mounting foot of MG8000 off the hotshoe of the camera. Make sure to turn the lock ring all the way to completely clear the lock pin off the hooking slot on the hotshoe.

Turn on the flash unit

- Press the on/off switch. Screen A appears, and the mode A is set.
- The pilot lamp blinks red showing the unit is charging.
- In a few seconds, the pilot lamp turns green.
- The display screen automatically turns off in about 30 seconds after the setting job is terminated.
- For a test-flash, press the pilot lamp.
- To turn off the flash unit manually, press the on/off switch and hold it for 2 seconds.